

MULTIPLE FS9.EXE: do it yourself!

No tool 😊

Hi friends,

Some sceneries request `TERRAIN_MAX_VERTEX_LEVEL = 19`, some 20 or 21....

Others work better with `UNLIMITED FRAMERATE`, some work only with frames limited to 24, 25 or whatever fps....

Some Photorealistic sceneries will get blurry when using `EXTENDED TEXTURES`, others no....

Some aircrafts have a specific joystick configuration; others like helicopters will have a completely different one....

I was personally fed up with spending time tweaking this poor FS9.cfg file, having thousands of different copies in my computer when I just observed that Microsoft offers us a very easy way to build several FS9.exe, one for each configuration. So now I have on my desktop several FS9 icons, each one is loading FS with its specific config:



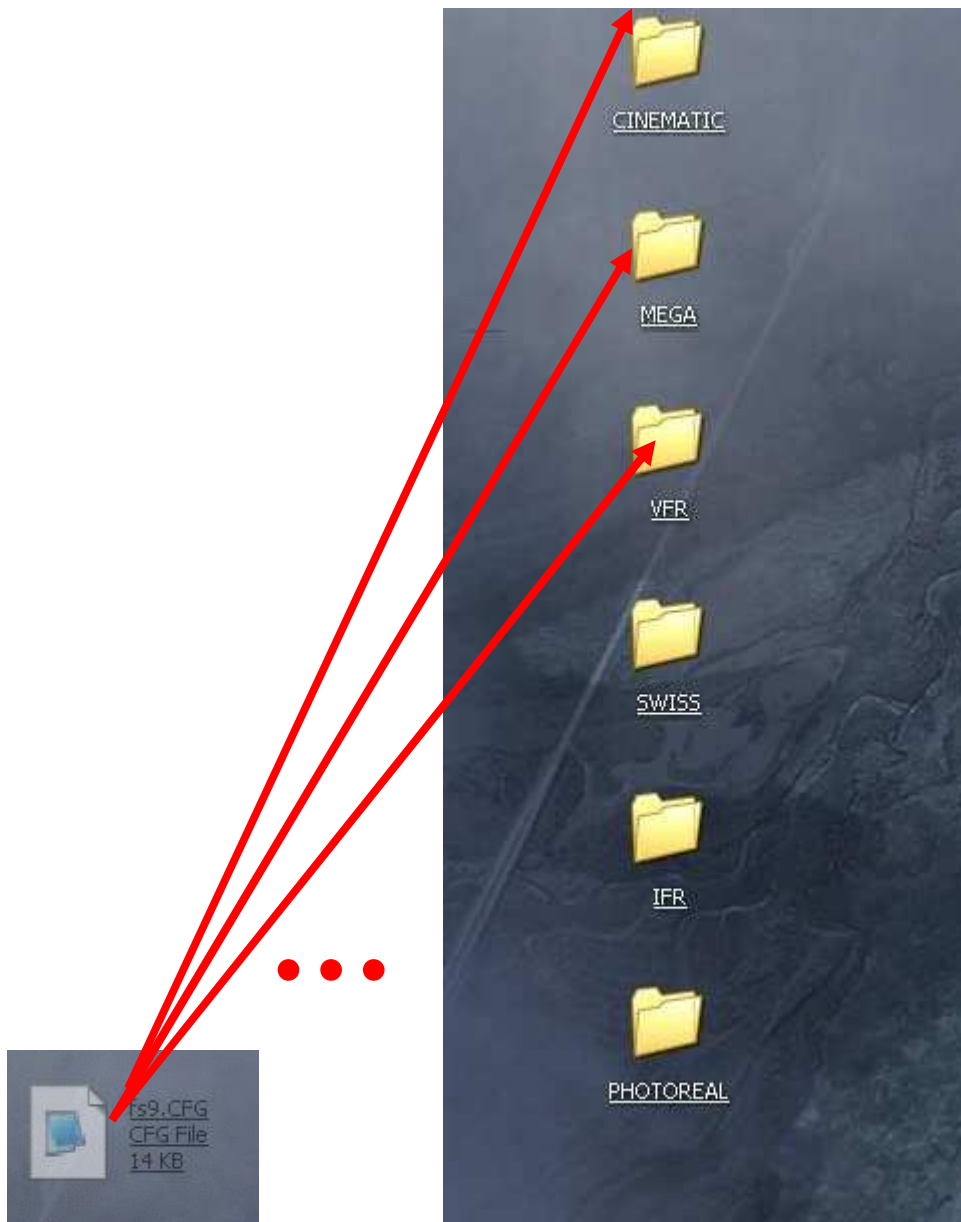
Very cool, really and so easy to do!!!.

Do you want to know how to do that in 2 minutes?

So follow me! 😊

• CREATING MULTIPLE FS9.CFG

- 1) Backup your FS9.cfg
- 2) Create on your desktop as much folders (configurations) as you wish
- 3) Copy in each folder your "normal" FS9.cfg



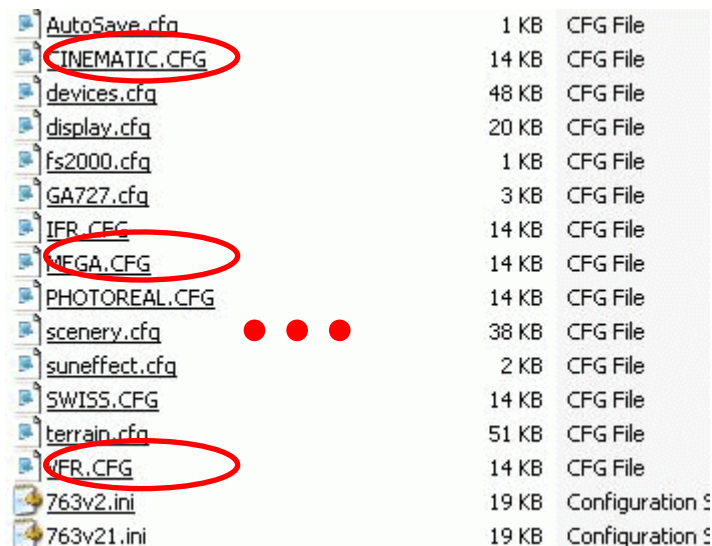
- 4) Now in my example I will take the FS9.cfg inside CINEMATIC (for Alaska Cinematic, the fantastic scenery made by Georender) and move it to C:\Documents and Settings\your name\Application Data\Microsoft\FS9

replacing the existing one (ok, it's the same one but it's helpful to do this small work, you will understand that right now...)

- 5) Load FS, make all the changes you want that match this type of scenery in the OPTIONS (display, hardware etc...) and shut down FS. Your FS9.cfg is now "specific" to this scenery, ok?
- 6) So move back this customized FS9.cfg into the CINEMATIC (or whatever) folder it was coming from
- 7) RENAME it (here it will be CINEMATIC.Cfg)
- 8) Do the same for all the other folders situations, according to the requirements, your taste, etc...

So! We have different folders containing different FS9.cfg that are named now IFR.cfg, VFR.cfg, Mega.cfg etc.... very simple, huh??

- 9) Now, take all these cfg files from the folders on your desktop and copy them directly into your **Main FS9 directory** (yes the MAIN directory!!!!)

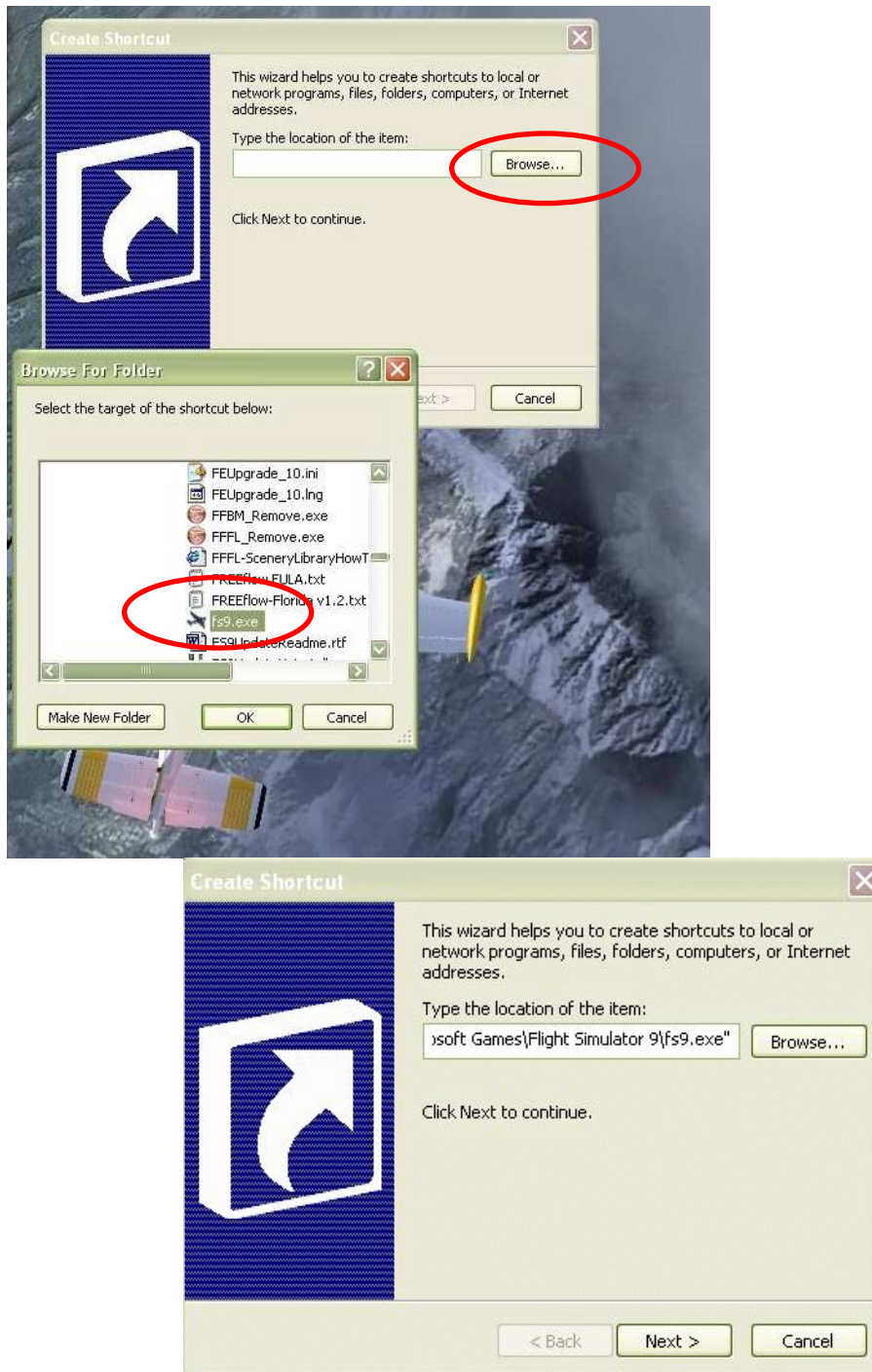


AutoSave.cfg	1 KB	CFG File
CINEMATIC.CFG	14 KB	CFG File
devices.cfg	48 KB	CFG File
display.cfg	20 KB	CFG File
fs2000.cfg	1 KB	CFG File
GA727.cfg	3 KB	CFG File
IFR_CFG	14 KB	CFG File
MEGA.CFG	14 KB	CFG File
PHOTOREAL.CFG	14 KB	CFG File
scenery.cfg	38 KB	CFG File
suneffect.cfg	2 KB	CFG File
SWISS.CFG	14 KB	CFG File
terrain.cfg	51 KB	CFG File
VFR_CFG	14 KB	CFG File
763v2.ini	19 KB	Configuration S
763v21.ini	19 KB	Configuration S

• CREATING FS9.EXE SHORTCUTS

10) On your desktop, right click and choose **CREATE NEW SHORTCUT**

11) Browse to find **FS9.exe**



12) At the end of the line `\fs9.exe"` add a **SPACE** and write **/CFG:CINEMATIC** (in my example)

You will get something like
... Games\Flight Simulator \fs9.exe" /CFG:CINEMATIC
(Beware! You don't have to write the cfg suffix!)

13) Click Next, give a name to your shortcut to recognize it easily and you are done.

14) Do the same for all the others shortcuts:

... Games\Flight Simulator \fs9.exe" /CFG:IFR
... Games\Flight Simulator \fs9.exe" /CFG:VFR
etc....

You now have several FS9.exe with their specific configs and name and before you fly just click the one that will match your next flight. All the parameters will be already installed.

This small tutorial is free.

Do what you want with it, it belongs to the simmers community now 😊

Enjoy !

David Roch

Jerusalem Dec 2005